

**Syntaxin 4 Antibody**  
**Rabbit mAb**  
**Catalog # AP92120****Specification**

---

**Syntaxin 4 Antibody - Product Information**

Application	WB
Primary Accession	<a href="#">Q12846</a>
Reactivity	Rat
Clonality	Monoclonal
<b>Other Names</b>	
p35 2; PLACENTAL; Stx4; STX4A; Syntaxin 4; syntaxin 4A;	
Isotype	Rabbit IgG
Host	Rabbit
Calculated MW	34180 Da

**Syntaxin 4 Antibody - Additional Information**

Dilution	WB~~1:1000
Purification	Affinity-chromatography
Immunogen	A synthesized peptide derived from human Syntaxin 4
Description	Plasma membrane t-SNARE that mediates docking of transport vesicles. Necessary for the translocation of SLC2A4 from intracellular vesicles to the plasma membrane.
Storage Condition and Buffer	Rabbit IgG in phosphate buffered saline , pH 7.4, 150mM NaCl, 0.02% sodium azide and 50% glycerol. Store at +4°C short term. Store at -20°C long term. Avoid freeze / thaw cycle.

**Syntaxin 4 Antibody - Protein Information****Name** STX4**Synonyms** STX4A**Function**

Plasma membrane t-SNARE that mediates docking of transport vesicles (By similarity). Necessary for the translocation of SLC2A4 from intracellular vesicles to the plasma membrane (By similarity). In neurons, recruited at neurite tips to membrane domains rich in the phospholipid 1-oleoyl-2-palmitoyl-PC (OPPC) which promotes neurite tip surface expression of the dopamine transporter SLC6A3/DAT by facilitating fusion of SLC6A3-containing transport vesicles with the plasma membrane (By similarity). Together with STXB3 and VAMP2, may also play a role in docking/fusion of intracellular GLUT4-containing vesicles with the cell surface in adipocytes and in docking of synaptic vesicles at presynaptic active zones (By similarity). Required for normal

hearing (PubMed:<a href="http://www.uniprot.org/citations/36355422" target="\_blank">36355422</a>).

#### Cellular Location

Cell membrane {ECO:0000250|UniProtKB:Q08850}; Single-pass type IV membrane protein. Cell projection, neuron projection {ECO:0000250|UniProtKB:Q08850}. Cell projection, stereocilium {ECO:0000250|UniProtKB:P70452}. Note=Localizes to neurite tips in neuronal cells. {ECO:0000250|UniProtKB:Q08850}

#### Tissue Location

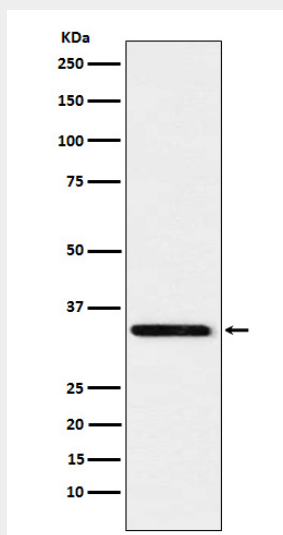
Expressed in neutrophils and neutrophil- differentiated HL-60 cells. Expression in neutrophils increases with differentiation.

### Syntaxin 4 Antibody - Protocols

Provided below are standard protocols that you may find useful for product applications.

- [Western Blot](#)
- [Blocking Peptides](#)
- [Dot Blot](#)
- [Immunohistochemistry](#)
- [Immunofluorescence](#)
- [Immunoprecipitation](#)
- [Flow Cytometry](#)
- [Cell Culture](#)

### Syntaxin 4 Antibody - Images



Western blot analysis of Syntaxin 4 expression in A431 cell lysate.